

Mover driving issues

If the camera called “Mover” does not make a clean lap, please note the following:

- Make sure you put the scan plate on a flat and even surface. Do not put the scan plate on a carpet!
- Make sure the scan plate is not standing on a cable etc.
- Make sure you are using the provided power supply cable "MEANWELL" Output: 18V / 2A / 36W

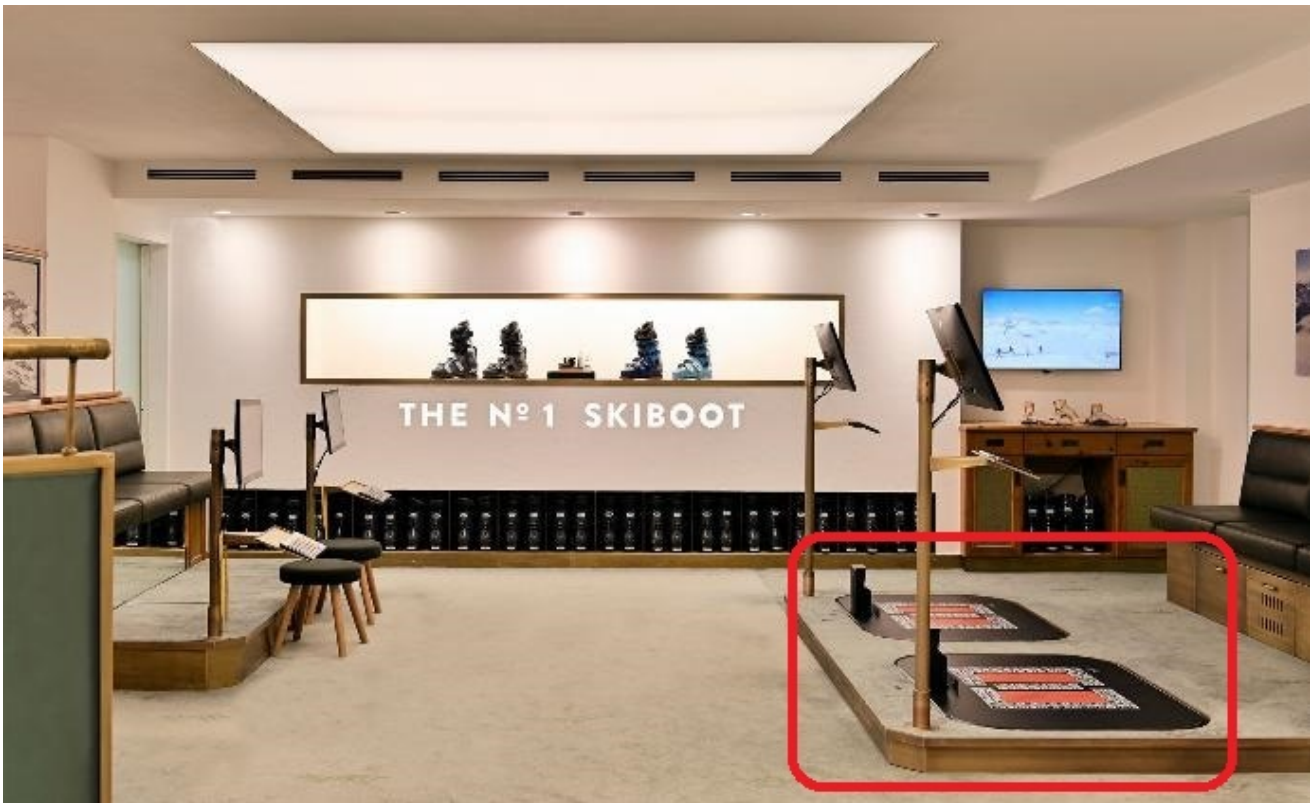


- Make sure the power supply cable is firm in the socket and the power LED on the scan plate is shining continuously and stable
 - Do not connect other large power consumers to the same power supply
 - Has anything changed before Mover driving problems occurred?
 - Has the stage been stored and recently reassembled?
 - Was it stored upright?
 - Was the drive belt inside the scan plate ever exchanged? You can see a small part of the drive belt when you take a close look at the park position
- old belt = all black

new belt = white / green



- Does the Mover have permanent contact with the magnets during the lap and also when back at the park position?
- Are you using a custom built frame around the scan plate?



- Make sure the frame does not press on the sides of the scan plate
- Do not put the scan plate directly on a floor heating system
- Are you sure the metal top cover plate is firm on the scan plate and it is not loose at any spot?